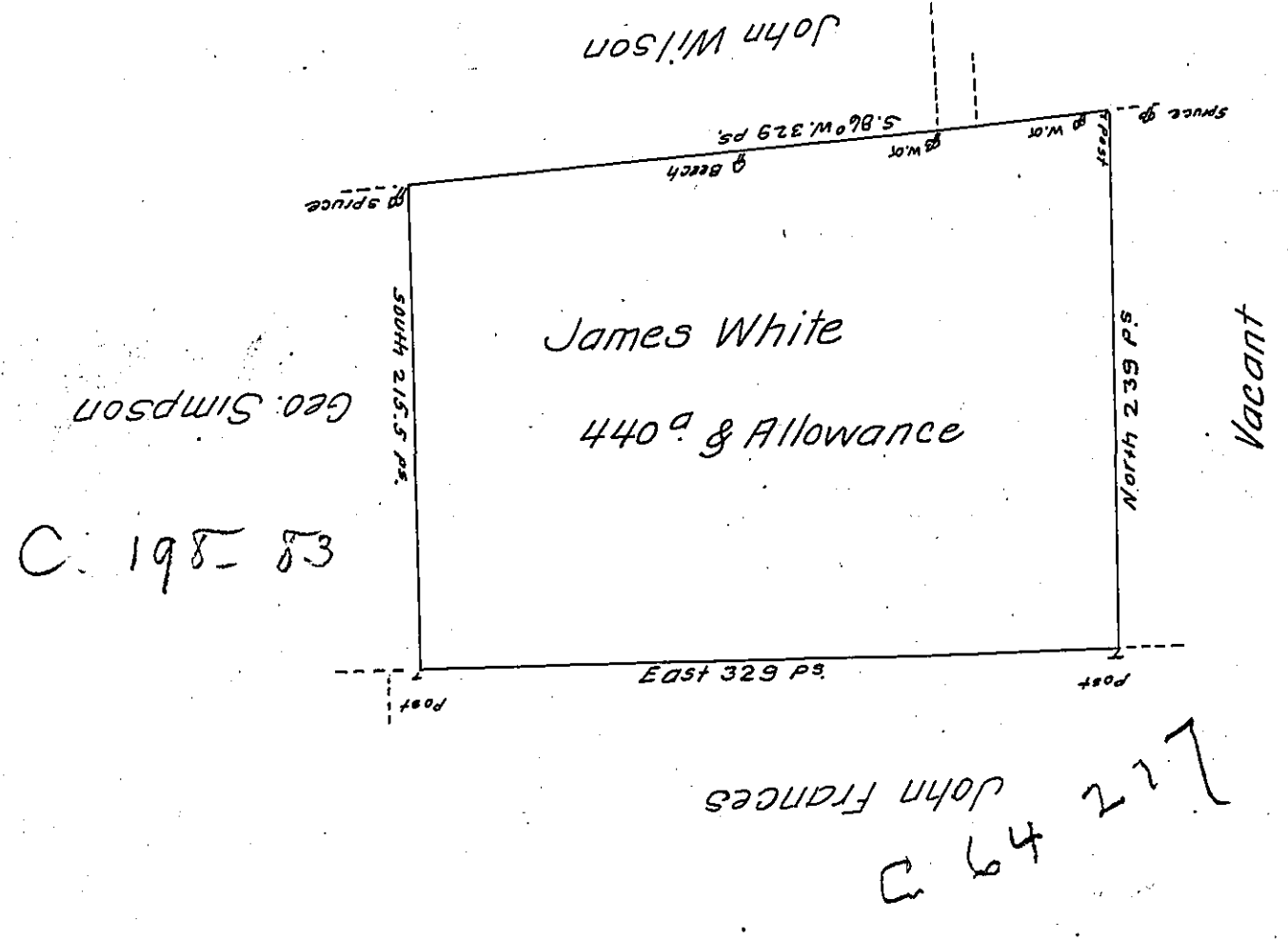


FORM No. 1.

3  
6  
E



A Draught of a tract of land Called — Situate Joining Land Surveyed  
 for John Francis & Others in Stoke Township North<sup>d</sup> County Containing  
 four Hundred & forty acres & Allowance of Six<sup>th</sup> Cent for Roads &c.  
 Surveyed for James White the 21<sup>st</sup> Day of July 1784 in Pursuance  
 of a Warrant Dated the 2<sup>d</sup> Day of July 1784

by  
 To John Lukens Esq<sup>r</sup>. } W<sup>m</sup> Gray D. S.  
 Surv<sup>r</sup> Gen<sup>l</sup> }

<sup>+</sup> now Luzerne County

IN TESTIMONY that the above is a copy of the original remaining on file in  
 the Department of Internal Affairs of Pennsylvania, made  
 conformably to an Act of Assembly approved the 16th day of  
 February 1833, I have hereunto set my hand and caused  
 the Seal of said Department to be affixed at Harrisburg,  
 this thirtieth day of April 1907.

*James R. Brown*  
 Secretary of Internal Affairs.